

**Anti-VEGI (Vascular Endothelial Growth Inhibitor) Antibody**  
**Mouse Monoclonal Antibody**  
**Catalog # AH13652****Specification**

---

**Anti-VEGI (Vascular Endothelial Growth Inhibitor) Antibody - Product Information**

Application	WB, IHC-P, IF, FC
Primary Accession	<a href="#">O95150</a>
Other Accession	<a href="#">241382</a>
Reactivity	Human
Host	Mouse
Clonality	Monoclonal
Isotype	Mouse / IgG1, kappa
Calculated MW	28087

**Anti-VEGI (Vascular Endothelial Growth Inhibitor) Antibody - Additional Information****Gene ID** 9966**Other Names**

TNF ligand-related molecule 1 (TL1A); Tumor necrosis factor (ligand) superfamily member 15 (TNFSF15); Vascular endothelial growth inhibitor 192a; Vascular endothelial growth inhibitor (VEGI); VEGI192A

**Application Note**

WB~~1:1000</span><br \><span class="dilution\_IHC-P">IHC-P~~N/A</span><br \><span class="dilution\_IF">IF~~1:50~200</span><br \><span class="dilution\_FC">FC~~1:10~50</span>

**Format**

200ug/ml of Ab purified from Bioreactor Concentrate by Protein A/G. Prepared in 10mM PBS with 0.05% BSA & 0.05% azide. Also available WITHOUT BSA & azide at 1.0mg/ml.

**Storage**

Store at 2 to 8°C. Antibody is stable for 24 months.

**Precautions**

Anti-VEGI (Vascular Endothelial Growth Inhibitor) Antibody is for research use only and not for use in diagnostic or therapeutic procedures.

**Anti-VEGI (Vascular Endothelial Growth Inhibitor) Antibody - Protein Information****Name** TNFSF15**Synonyms** TL1, VEGI**Function**

Receptor for TNFRSF25 and TNFRSF6B. Mediates activation of NF-kappa-B. Inhibits vascular

endothelial growth and angiogenesis (in vitro). Promotes activation of caspases and apoptosis.

**Cellular Location**

Membrane; Single-pass type II membrane protein

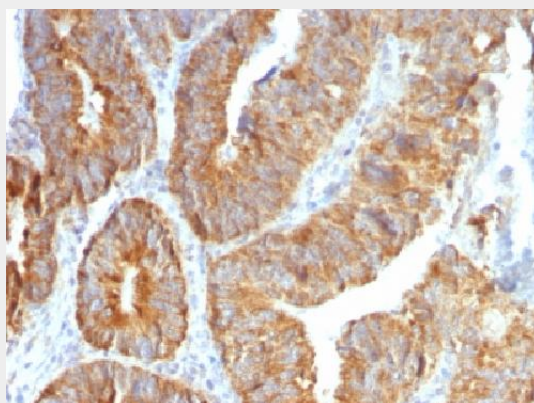
**Tissue Location**

Specifically expressed in endothelial cells. Detected in monocytes, placenta, lung, liver, kidney, skeletal muscle, pancreas, spleen, prostate, small intestine and colon

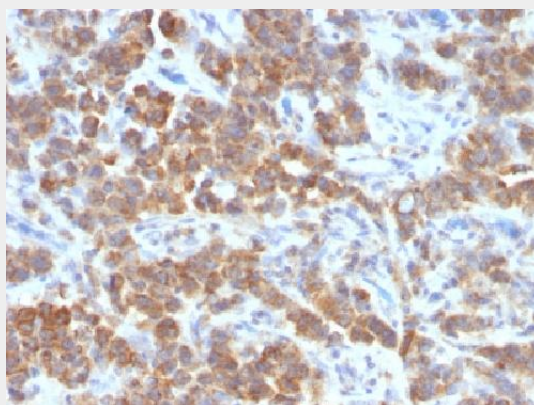
**Anti-VEGI (Vascular Endothelial Growth Inhibitor) Antibody - Protocols**

Provided below are standard protocols that you may find useful for product applications.

- [Western Blot](#)
- [Blocking Peptides](#)
- [Dot Blot](#)
- [Immunohistochemistry](#)
- [Immunofluorescence](#)
- [Immunoprecipitation](#)
- [Flow Cytometry](#)
- [Cell Culture](#)

**Anti-VEGI (Vascular Endothelial Growth Inhibitor) Antibody - Images**

Formalin-fixed, paraffin-embedded human Colon Carcinoma stained with VEGI Monoclonal Antibody (VEGI /1283).



Formalin-fixed, paraffin-embedded human Parathyroid Mass stained with VEGI Monoclonal

Antibody (VEGI /1283).

### **Anti-VEGI (Vascular Endothelial Growth Inhibitor) Antibody - Background**

VEGI is an anti-angiogenic cytokine that belongs to tumor necrosis factor superfamily, member 15 (TNFSF15). This protein is abundantly expressed in endothelial cells, but is not expressed in either B or T cells. The expression of this protein is inducible by TNF and IL-1 alpha. This cytokine is a ligand for receptor TNFRSF25 and decoy receptor TNFRSF21/DR6. It can activate NF-kappaB and MAP kinases, and acts as an autocrine factor to induce apoptosis in endothelial cells. This cytokine is also found to inhibit endothelial cell proliferation, and thus may function as an angiogenesis inhibitor. Reduced expression of VEGI has been reported as a marker of poor prognosis in breast cancer.